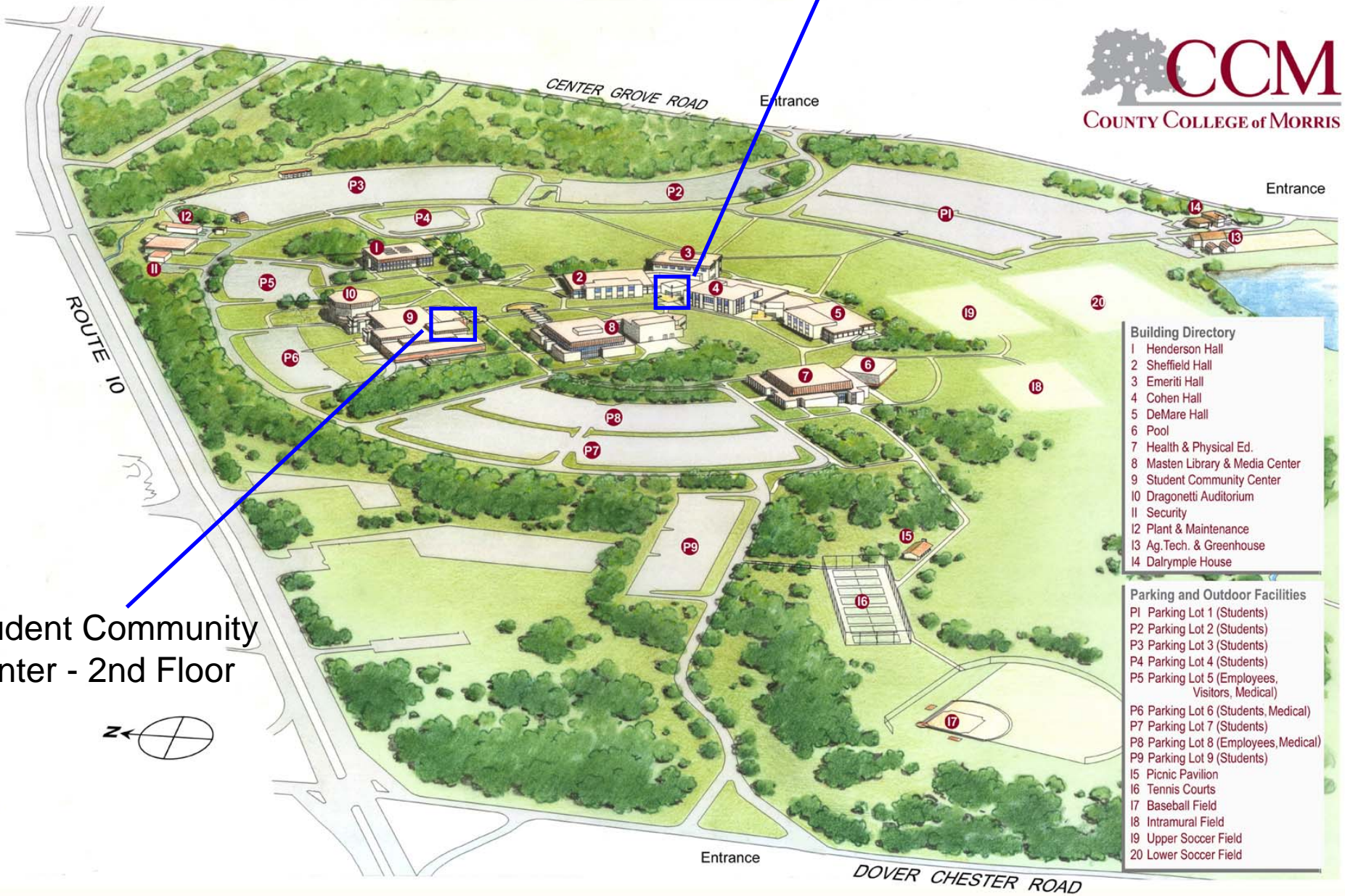


# COLLEGE VISIT LOCATIONS

Sheffield Alcove



Student Community Center - 2nd Floor



- | Building Directory |                               |
|--------------------|-------------------------------|
| 1                  | Henderson Hall                |
| 2                  | Sheffield Hall                |
| 3                  | Emeriti Hall                  |
| 4                  | Cohen Hall                    |
| 5                  | DeMare Hall                   |
| 6                  | Pool                          |
| 7                  | Health & Physical Ed.         |
| 8                  | Masten Library & Media Center |
| 9                  | Student Community Center      |
| 10                 | Dragonetti Auditorium         |
| 11                 | Security                      |
| 12                 | Plant & Maintenance           |
| 13                 | Ag. Tech. & Greenhouse        |
| 14                 | Dalrymple House               |
- 
- | Parking and Outdoor Facilities |  |
|--------------------------------|--|
| P1                             | Parking Lot 1 (Students)                     |
| P2                             | Parking Lot 2 (Students)                     |
| P3                             | Parking Lot 3 (Students)                     |
| P4                             | Parking Lot 4 (Students)                     |
| P5                             | Parking Lot 5 (Employees, Visitors, Medical) |
| P6                             | Parking Lot 6 (Students, Medical)            |
| P7                             | Parking Lot 7 (Students)                     |
| P8                             | Parking Lot 8 (Employees, Medical)           |
| P9                             | Parking Lot 9 (Students)                     |
| 15                             | Picnic Pavilion                              |
| 16                             | Tennis Courts                                |
| 17                             | Baseball Field                               |
| 18                             | Intramural Field                             |
| 19                             | Upper Soccer Field                           |
| 20                             | Lower Soccer Field                           |